

Park Divisions

- Northside
- Eastside
- Westside
- Southside
- Downtown
- East End

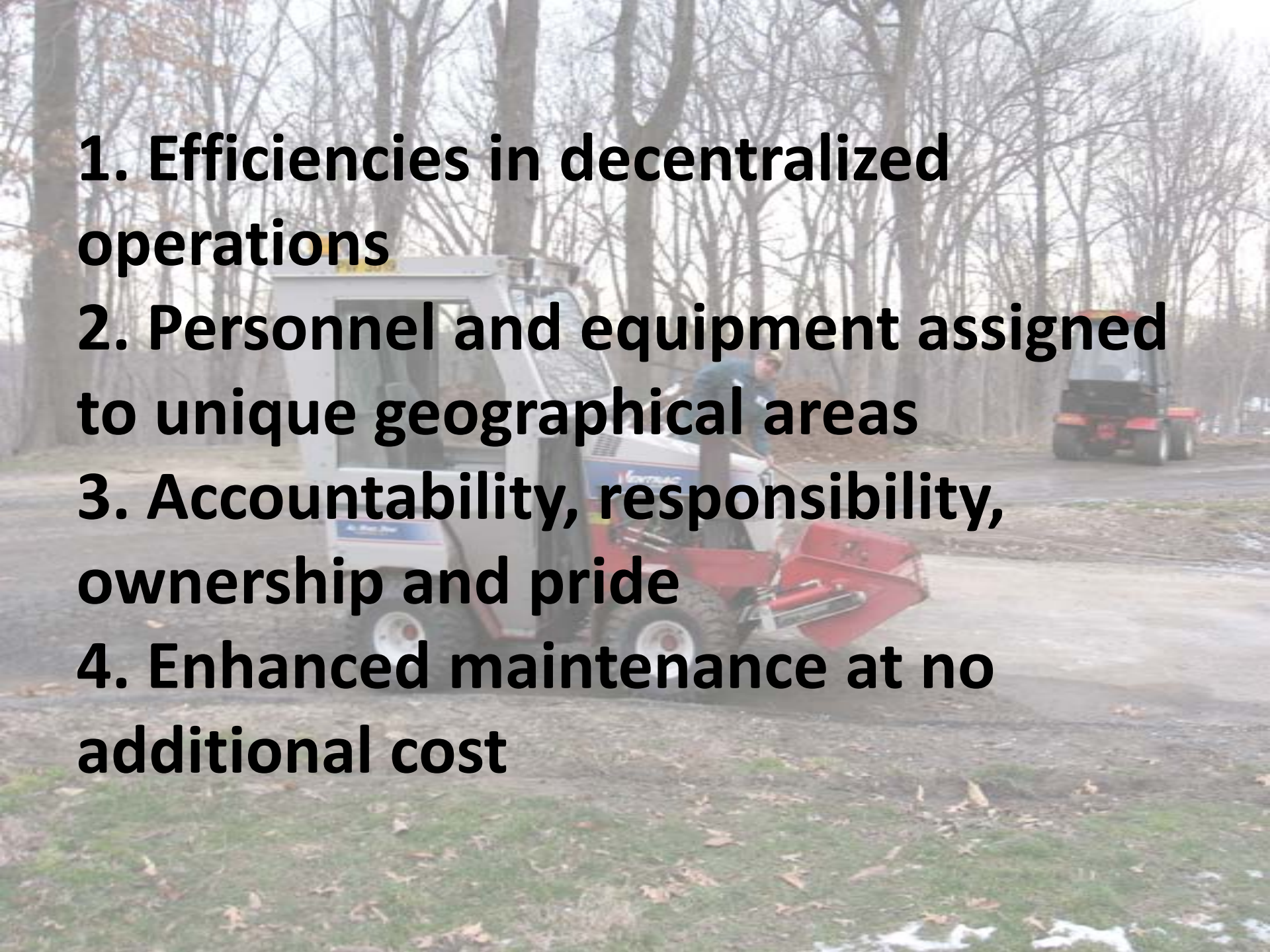
Pittsburgh Parks

1. Efficiencies in decentralized operations

2. Personnel and equipment assigned to unique geographical areas

3. Accountability, responsibility, ownership and pride

4. Enhanced maintenance at no additional cost





World Class - Excellence



Employees to Landscape Types Ratios

Landscape Type	FTE / Acre
• High Care Annual & Perennial Gardens with Small Fine Lawn	3/1
• Propagation House and Nurseries	2/1
• Medium-High Care Perennial & Shrub Gardens	1/1
• Medium Intensity Shrub, Tree & Herbaceous Collections	1/3
• Low Intensity Tree & Shrub Collections with Some Lawn	1/5
• Fine Lawn	1/9
• General Lawn	1/18
• Gravel Roads and Parking	1/25
• Meadows	1/30
• Managed Woodlands in Good Condition	1/30